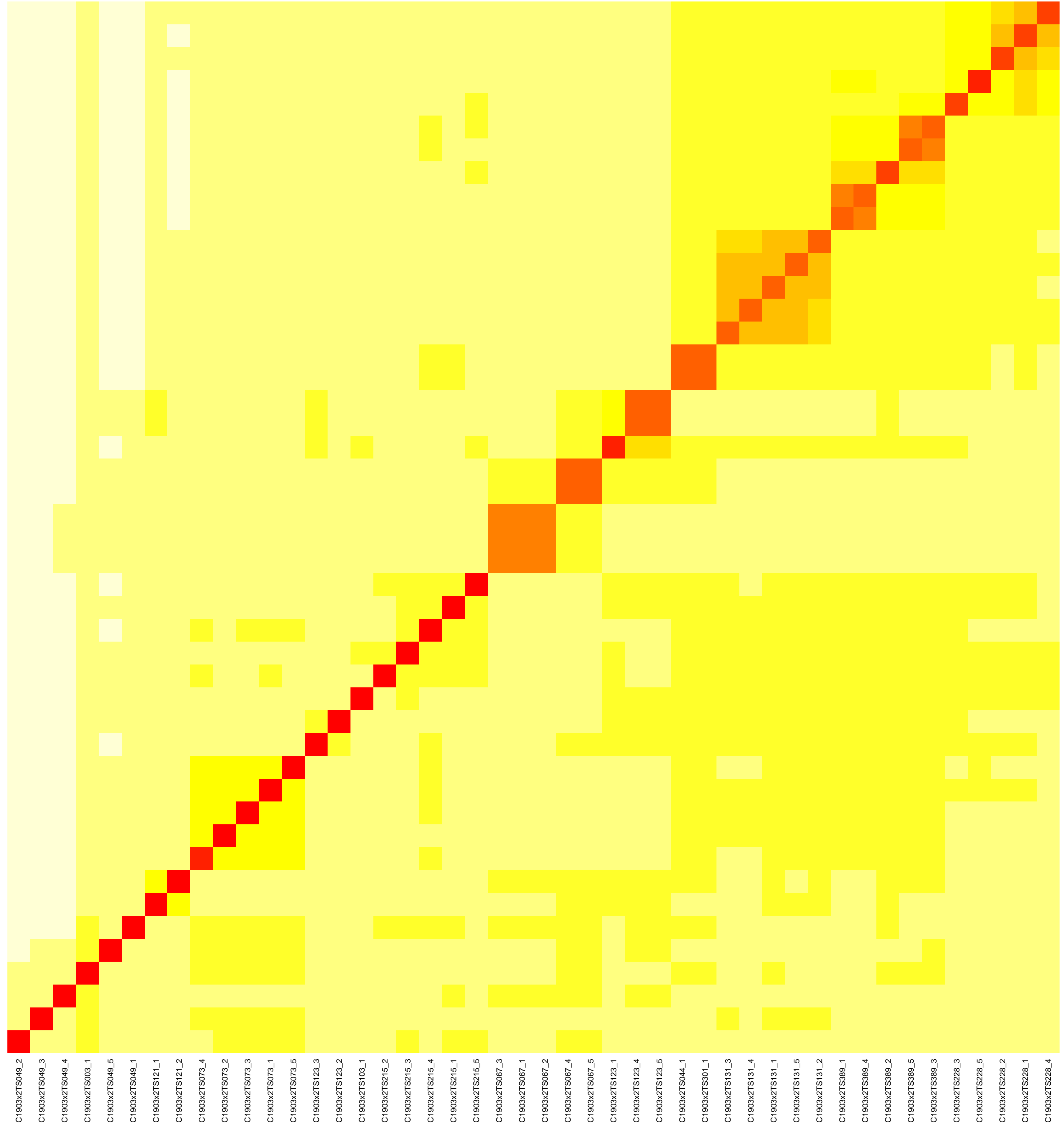
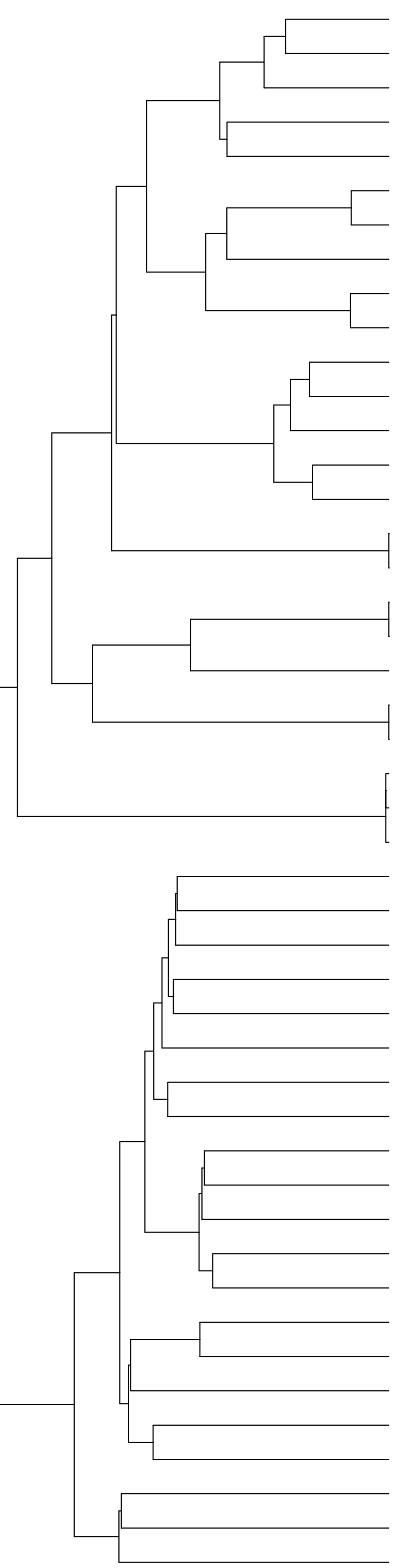
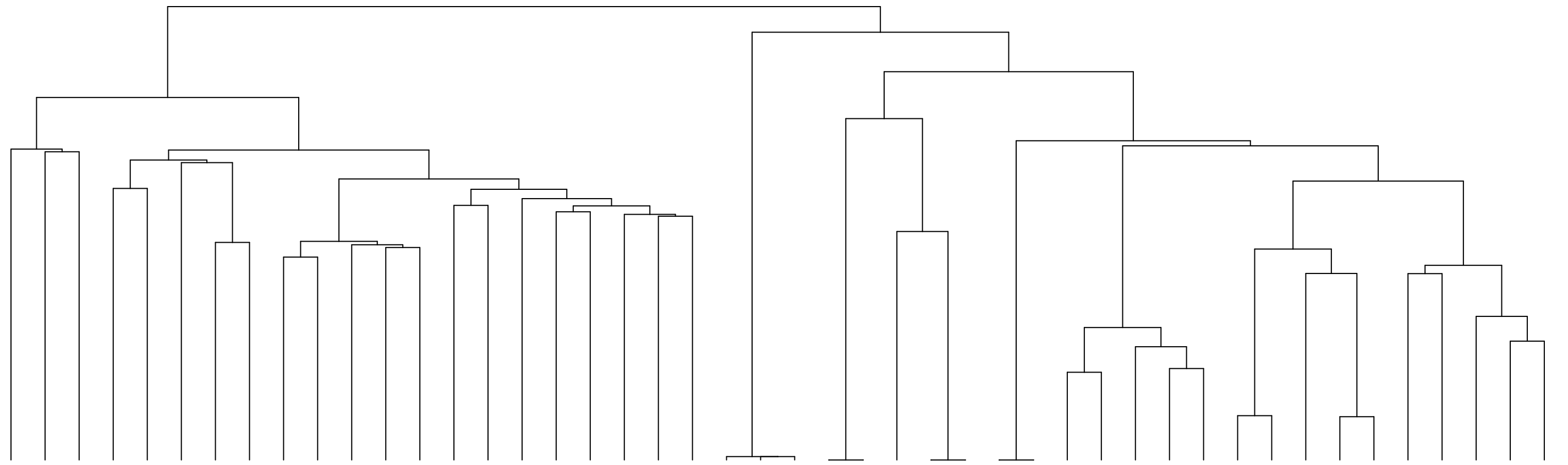


LDDT-based clustering heatmap for C1903x2



C1903x2TS228\_4  
C1903x2TS228\_1  
C1903x2TS228\_2  
C1903x2TS228\_5  
C1903x2TS228\_3  
C1903x2TS389\_3  
C1903x2TS389\_5  
C1903x2TS389\_2  
C1903x2TS389\_4  
C1903x2TS389\_1  
C1903x2TS131\_2  
C1903x2TS131\_5  
C1903x2TS131\_1  
C1903x2TS131\_4  
C1903x2TS131\_3  
C1903x2TS301\_1  
C1903x2TS044\_1  
C1903x2TS123\_5  
C1903x2TS123\_4  
C1903x2TS123\_1  
C1903x2TS067\_5  
C1903x2TS067\_4  
C1903x2TS067\_2  
C1903x2TS067\_1  
C1903x2TS067\_3  
C1903x2TS215\_5  
C1903x2TS215\_1  
C1903x2TS215\_4  
C1903x2TS215\_3  
C1903x2TS215\_2  
C1903x2TS103\_1  
C1903x2TS123\_2  
C1903x2TS123\_3  
C1903x2TS073\_5  
C1903x2TS073\_1  
C1903x2TS073\_3  
C1903x2TS073\_2  
C1903x2TS073\_4  
C1903x2TS121\_2  
C1903x2TS121\_1  
C1903x2TS049\_1  
C1903x2TS049\_5  
C1903x2TS003\_1  
C1903x2TS049\_4  
C1903x2TS049\_3  
C1903x2TS049\_2